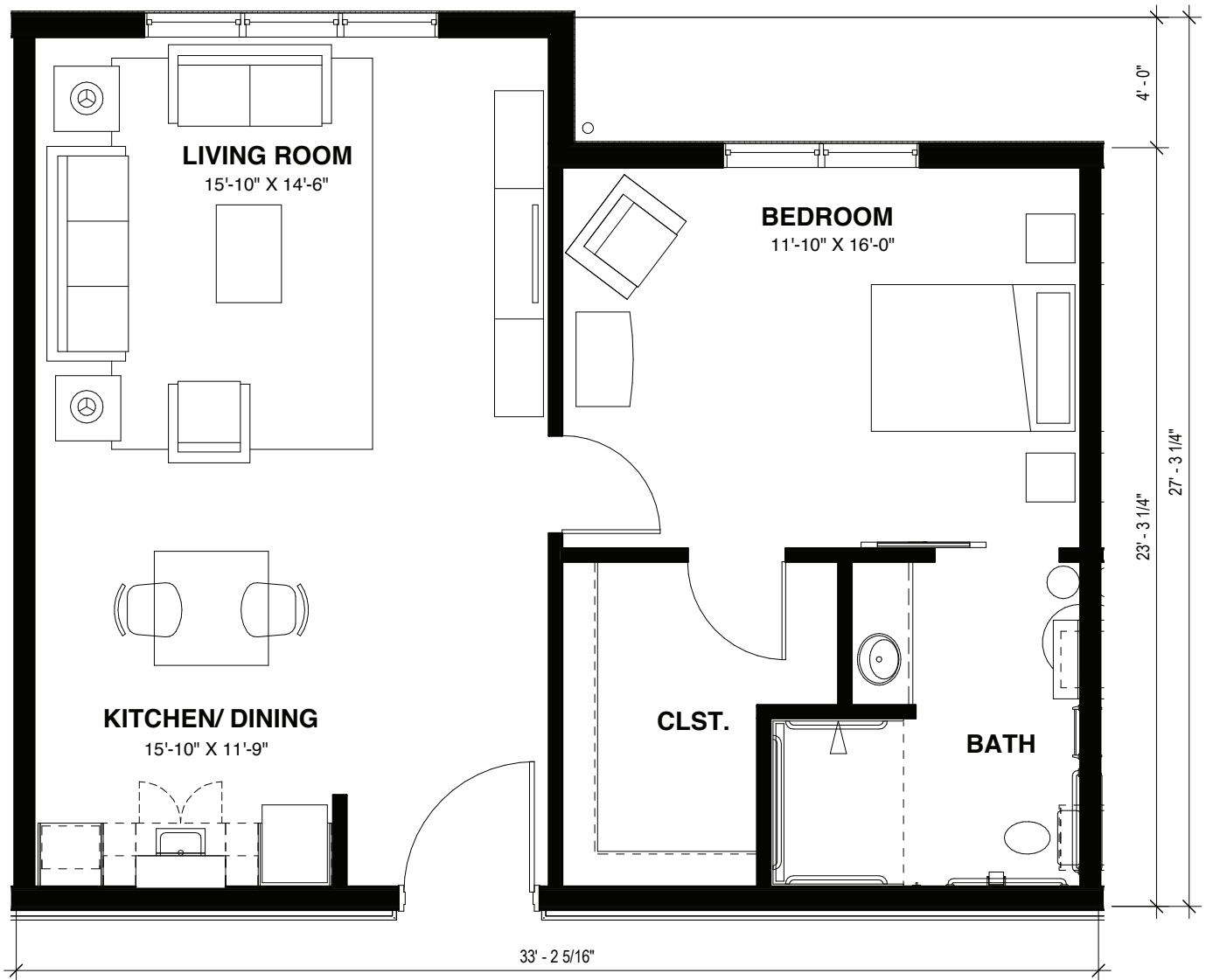


# ANSLEY

CLUB HOUSE  
1<sup>ST</sup> FLOOR

771 SQ FT



THE TERRACES®

AT PEACHTREE HILLS PLACE

Luxury Homes & Condominiums for 55+ | [PeachtreeHillsPlace.com](http://PeachtreeHillsPlace.com)

229 Peachtree Hills Avenue NE Atlanta, GA 30305 | (678) 940-8694

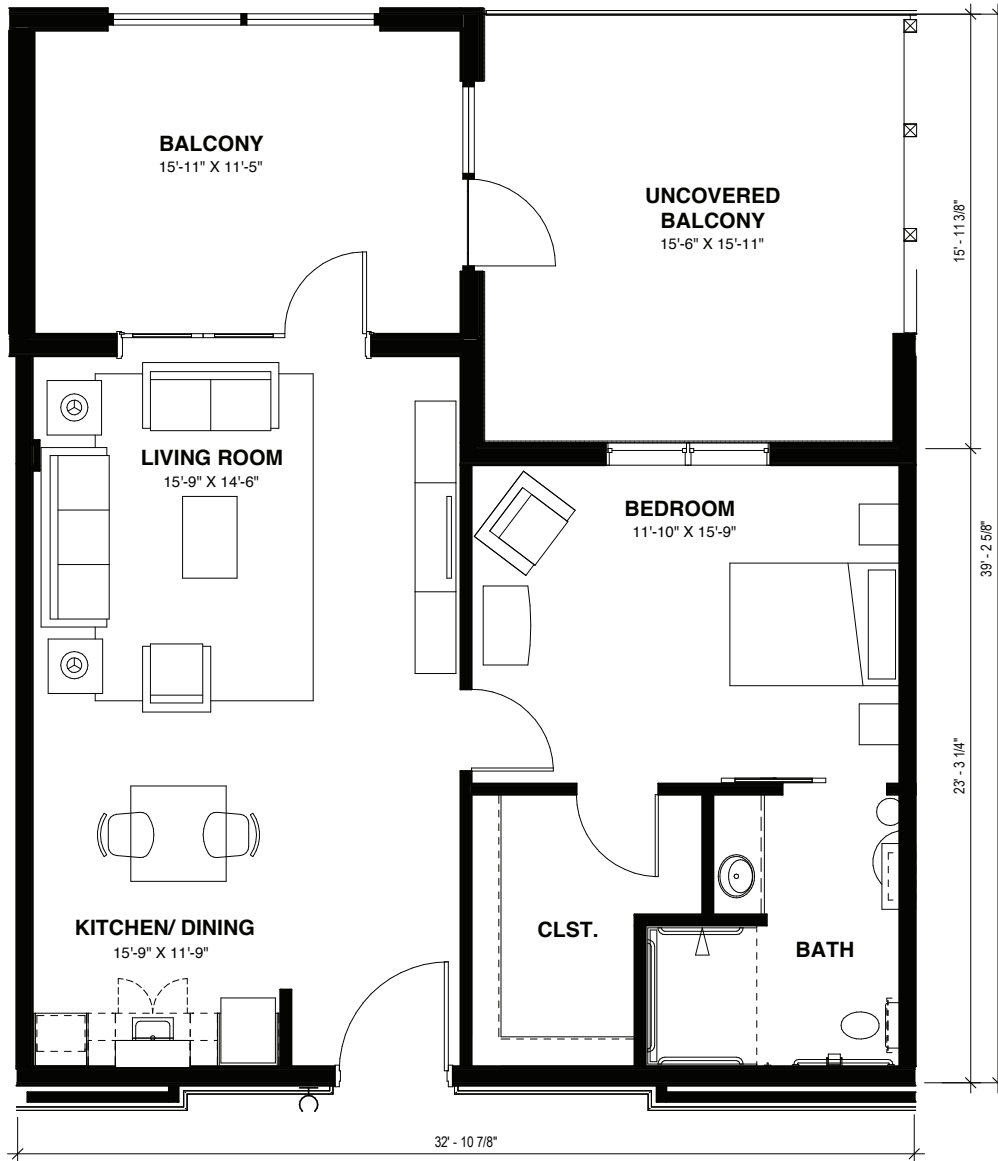
Floorplan graphics provided for conceptual purposes only. Actual construction and finishing may vary. Optional items noted are available through the design process and will incur additional costs.



# CHADWICK

CLUB HOUSE  
1<sup>ST</sup> FLOOR

765 SQ FT WITH  
176 SQ FT SCREENED PATIO  
AND 240 SQ FT TERRACE



THE TERRACES®

AT PEACHTREE HILLS PLACE

Luxury Homes & Condominiums for 55+ | [PeachtreeHillsPlace.com](http://PeachtreeHillsPlace.com)

229 Peachtree Hills Avenue NE Atlanta, GA 30305 | (678) 940-8694

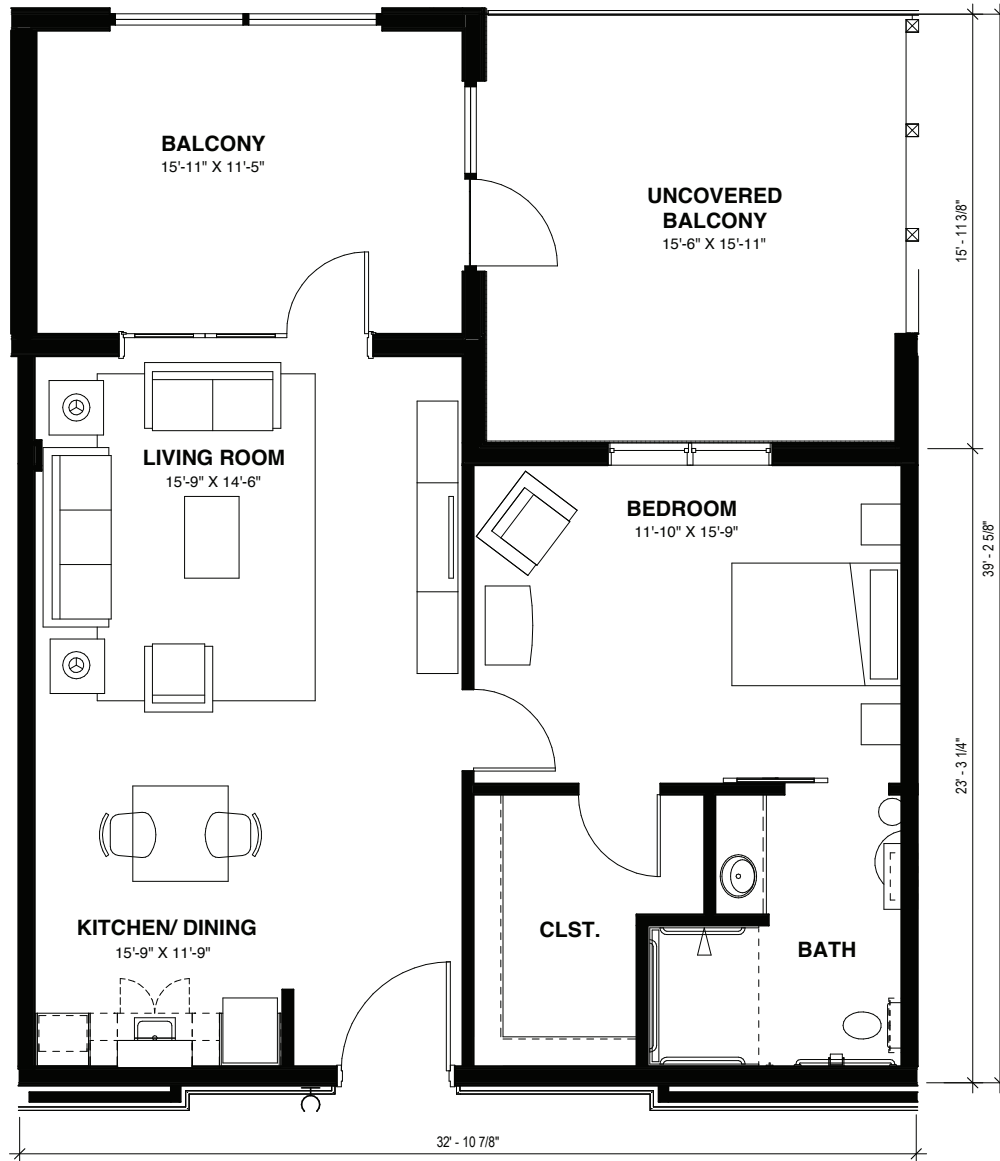
Floorplan graphics provided for conceptual purposes only. Actual construction and finishing may vary. Optional items noted are available through the design process and will incur additional costs.



# CHASTAIN

CLUB HOUSE  
1<sup>ST</sup> FLOOR

839 SQ FT WITH  
176 SQ FT SCREENED PATIO  
AND 240 SQ FT TERRACE



THE TERRACES®

AT PEACHTREE HILLS PLACE

Luxury Homes & Condominiums for 55+ | [PeachtreeHillsPlace.com](http://PeachtreeHillsPlace.com)  
229 Peachtree Hills Avenue NE Atlanta, GA 30305 | (678) 940-8694

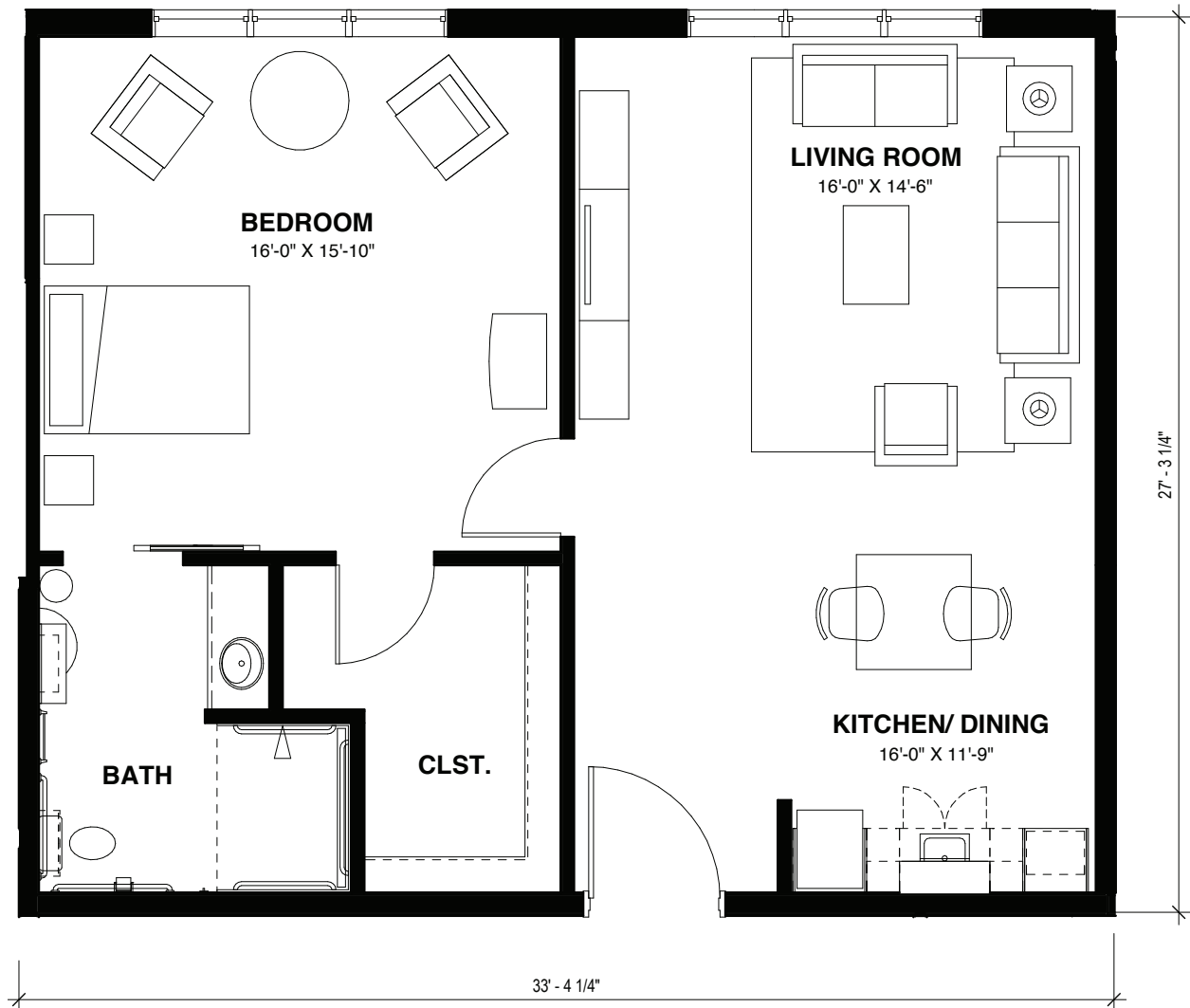
Floorplan graphics provided for conceptual purposes only. Actual construction and finishing may vary. Optional items noted are available through the design process and will incur additional costs.



# HABERSHAM

RIVER HOUSE  
2<sup>ND</sup> FLOOR

771 SQ FT



THE TERRACES®

AT PEACHTREE HILLS PLACE

Luxury Homes & Condominiums for 55+ | [PeachtreeHillsPlace.com](http://PeachtreeHillsPlace.com)  
229 Peachtree Hills Avenue NE Atlanta, GA 30305 | (678) 940-8694

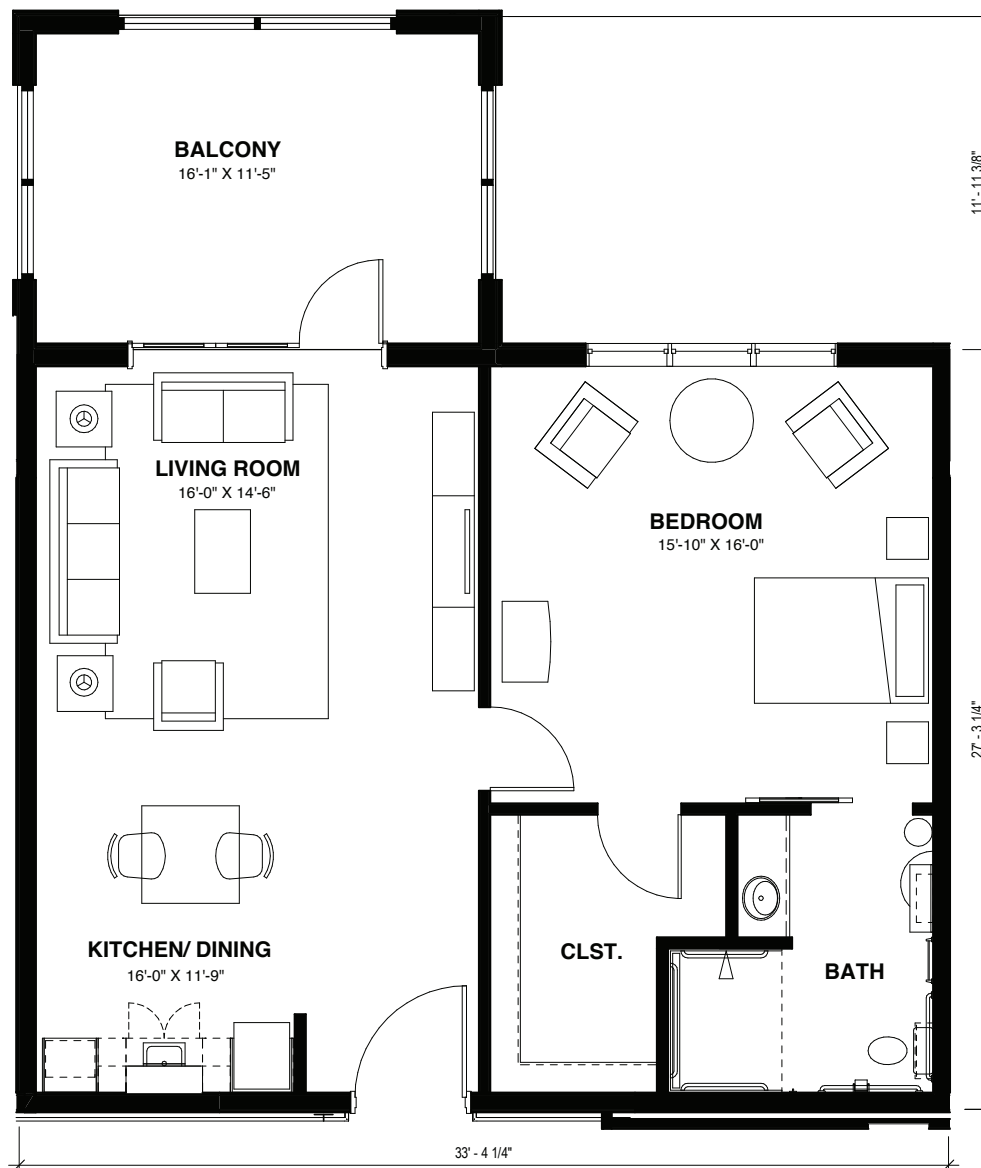
Floorplan graphics provided for conceptual purposes only. Actual construction and finishing may vary. Optional items noted are available through the design process and will incur additional costs.



# HANOVER

RIVER HOUSE  
2<sup>ND</sup> FLOOR

765 SQ FT



THE TERRACES®

AT PEACHTREE HILLS PLACE

Luxury Homes & Condominiums for 55+ | [PeachtreeHillsPlace.com](http://PeachtreeHillsPlace.com)

229 Peachtree Hills Avenue NE Atlanta, GA 30305 | (678) 940-8694

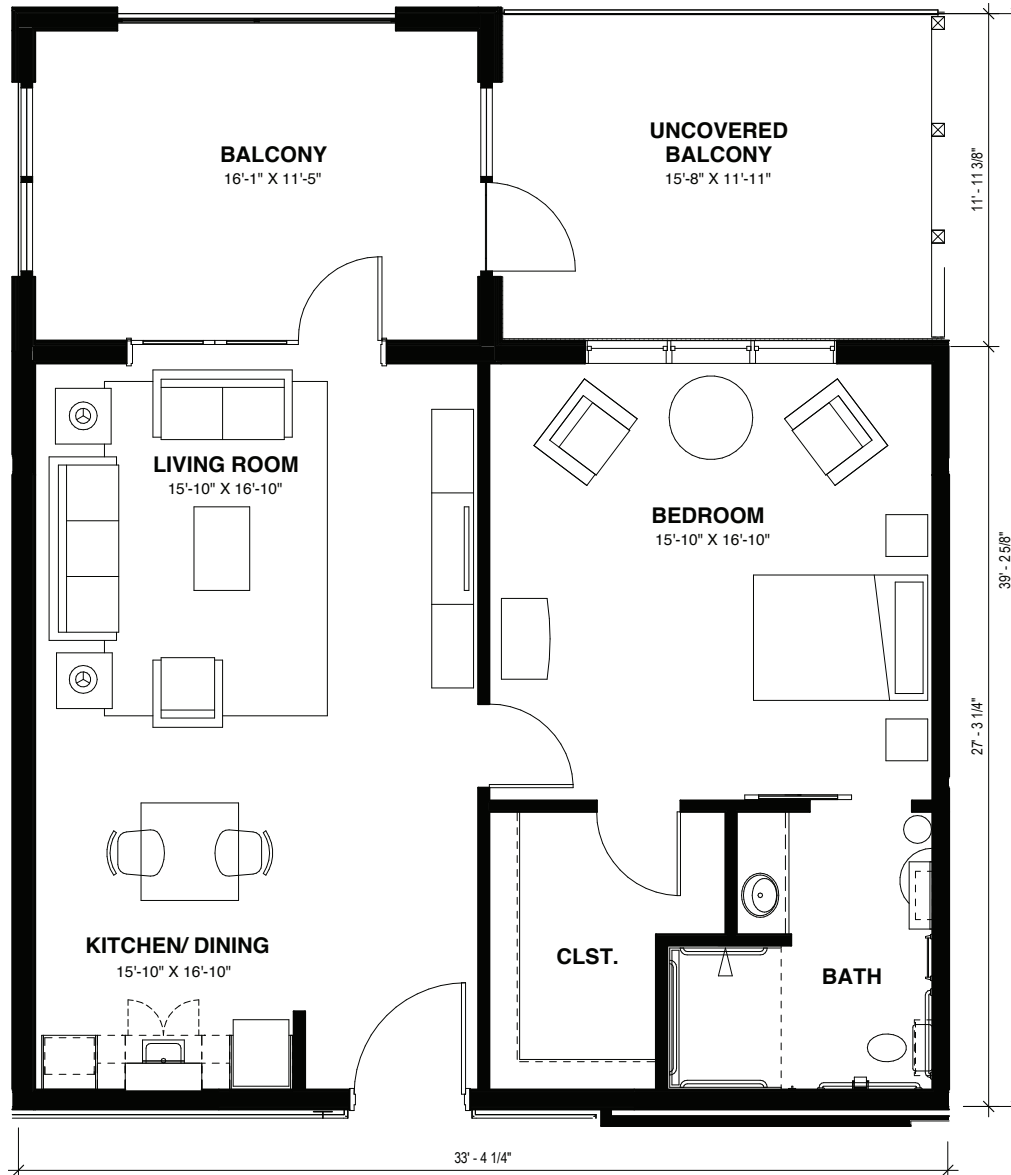
Floorplan graphics provided for conceptual purposes only. Actual construction and finishing may vary. Optional items noted are available through the design process and will incur additional costs.



# PIEDMONT

RIVER HOUSE  
2<sup>ND</sup> FLOOR

839 SQ FT WITH 176 SQ FT  
SCREENED PATIO



THE TERRACES®

AT PEACHTREE HILLS PLACE

Luxury Homes & Condominiums for 55+ | [PeachtreeHillsPlace.com](http://PeachtreeHillsPlace.com)

229 Peachtree Hills Avenue NE Atlanta, GA 30305 | (678) 940-8694

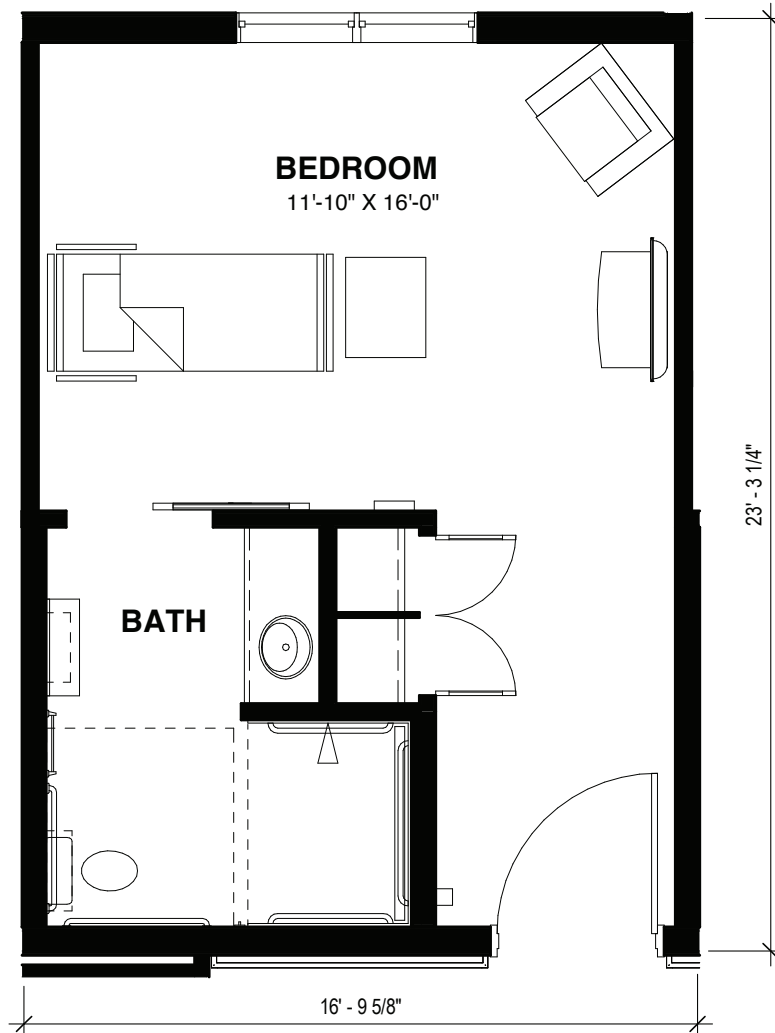
Floorplan graphics provided for conceptual purposes only. Actual construction and finishing may vary. Optional items noted are available through the design process and will incur additional costs.



# SUTTON

FARM HOUSE  
4<sup>TH</sup> FLOOR

351 SQ FT



THE TERRACES®

AT PEACHTREE HILLS PLACE

Luxury Homes & Condominiums for 55+ | [PeachtreeHillsPlace.com](http://PeachtreeHillsPlace.com)

229 Peachtree Hills Avenue NE Atlanta, GA 30305 | (678) 940-8694

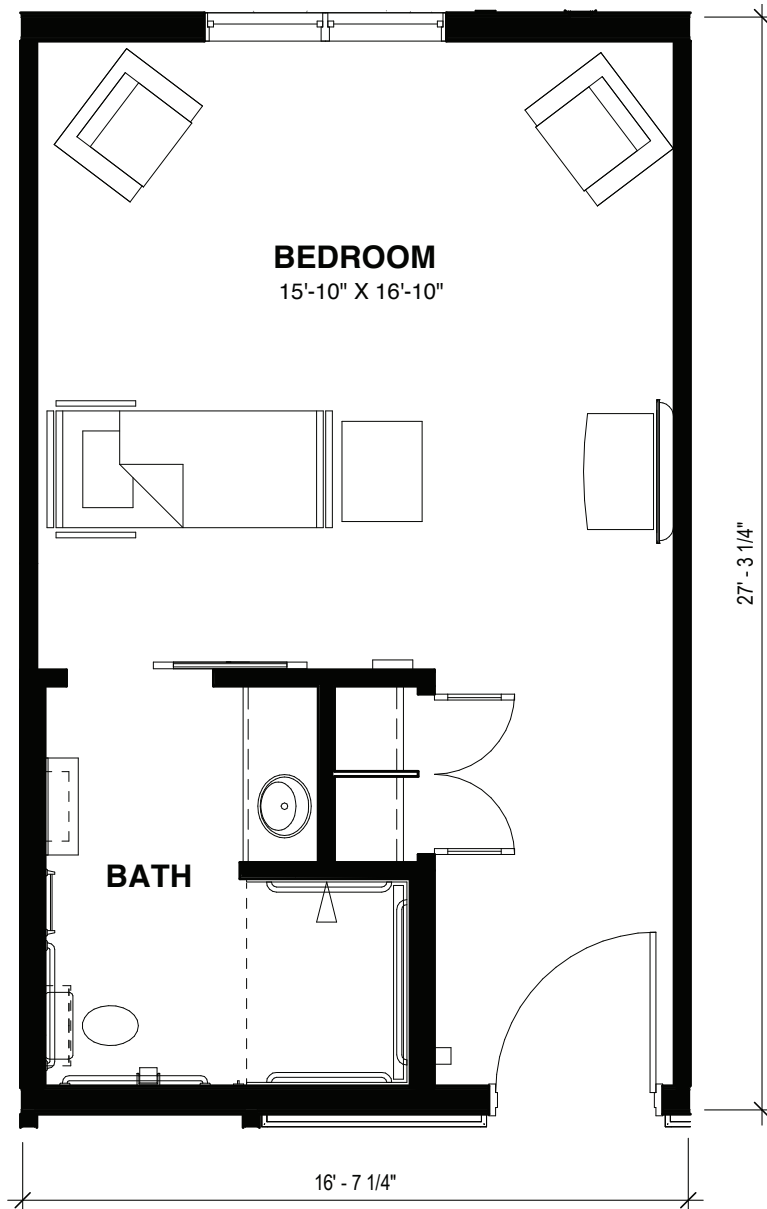
Floorplan graphics provided for conceptual purposes only. Actual construction and finishing may vary. Optional items noted are available through the design process and will incur additional costs.



# WESLEY

FARM HOUSE  
4<sup>TH</sup> FLOOR

414 SQ FT



THE TERRACES®

AT PEACHTREE HILLS PLACE

Luxury Homes & Condominiums for 55+ | [PeachtreeHillsPlace.com](http://PeachtreeHillsPlace.com)

229 Peachtree Hills Avenue NE Atlanta, GA 30305 | (678) 940-8694

Floorplan graphics provided for conceptual purposes only. Actual construction and finishing may vary. Optional items noted are available through the design process and will incur additional costs.

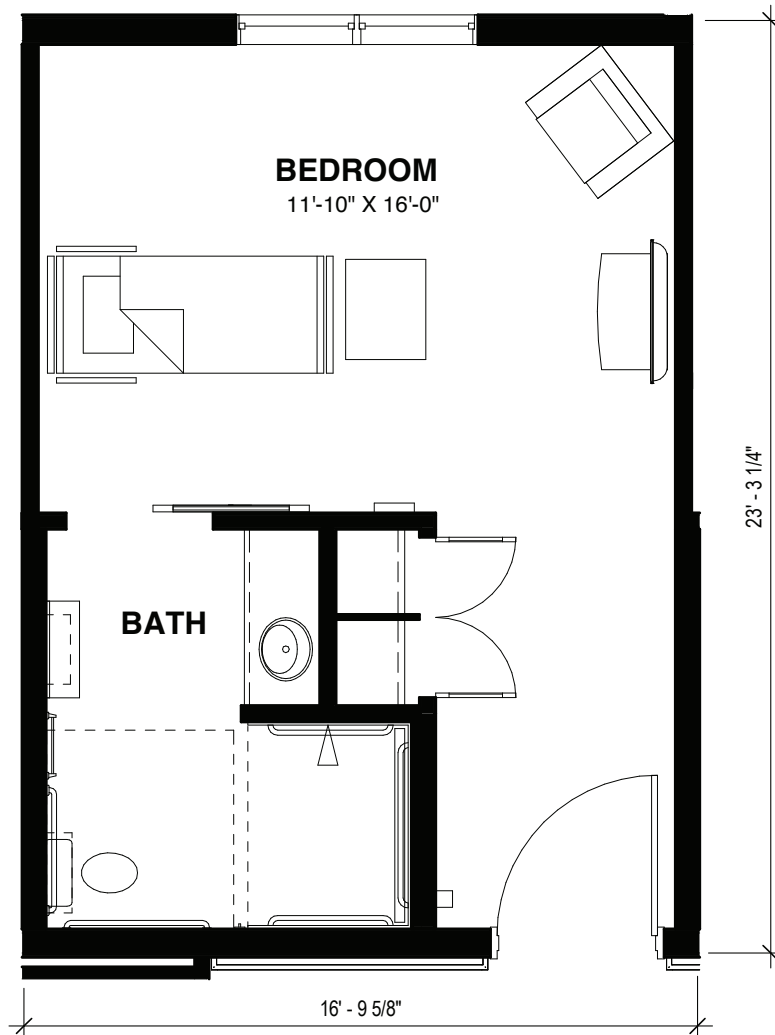




# WILMINGTON

GARDEN, MOUNTAIN  
& LAKE HOUSE  
3<sup>RD</sup> FLOOR

351 SQ FT



THE TERRACES®

AT PEACHTREE HILLS PLACE

Luxury Homes & Condominiums for 55+ | [PeachtreeHillsPlace.com](http://PeachtreeHillsPlace.com)

229 Peachtree Hills Avenue NE Atlanta, GA 30305 | (678) 940-8694

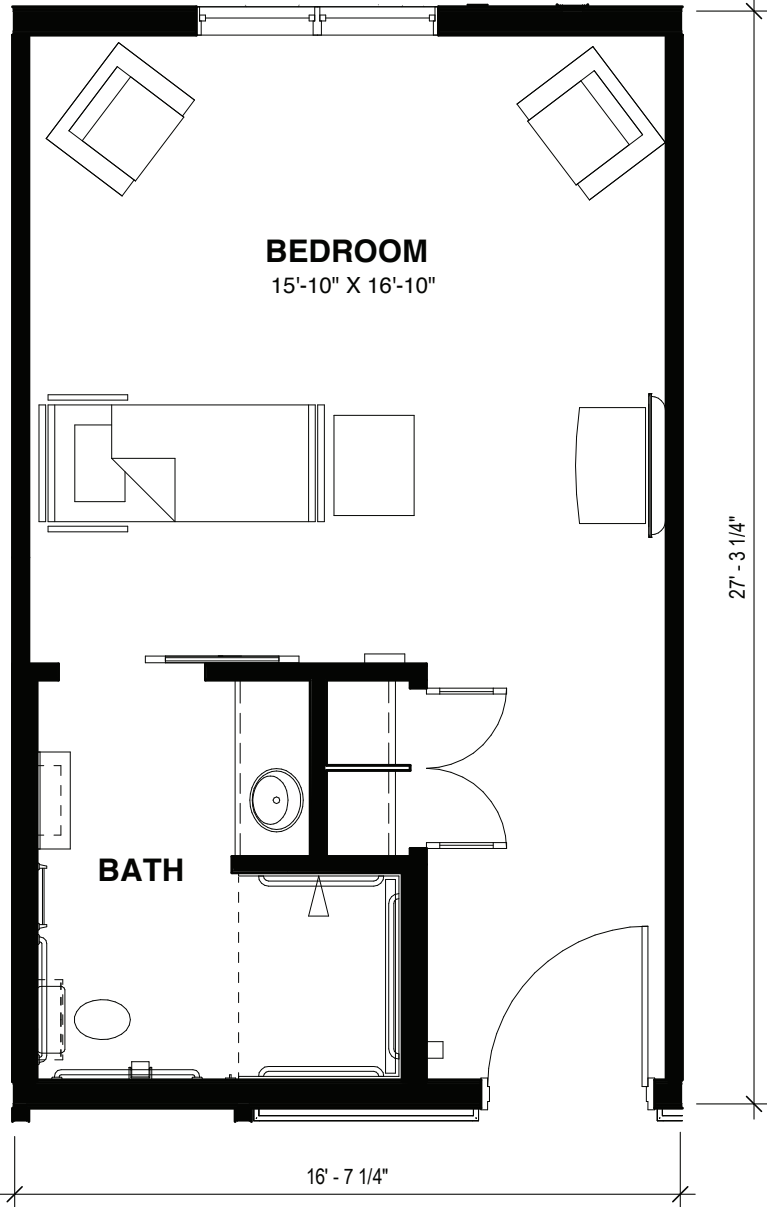
Floorplan graphics provided for conceptual purposes only. Actual construction and finishing may vary. Optional items noted are available through the design process and will incur additional costs.



# WINDSOR

GARDEN, MOUNTAIN  
& LAKE HOUSE  
3<sup>RD</sup> FLOOR

414 SQ FT



THE TERRACES®

AT PEACHTREE HILLS PLACE

Luxury Homes & Condominiums for 55+ | [PeachtreeHillsPlace.com](http://PeachtreeHillsPlace.com)

229 Peachtree Hills Avenue NE Atlanta, GA 30305 | (678) 940-8694

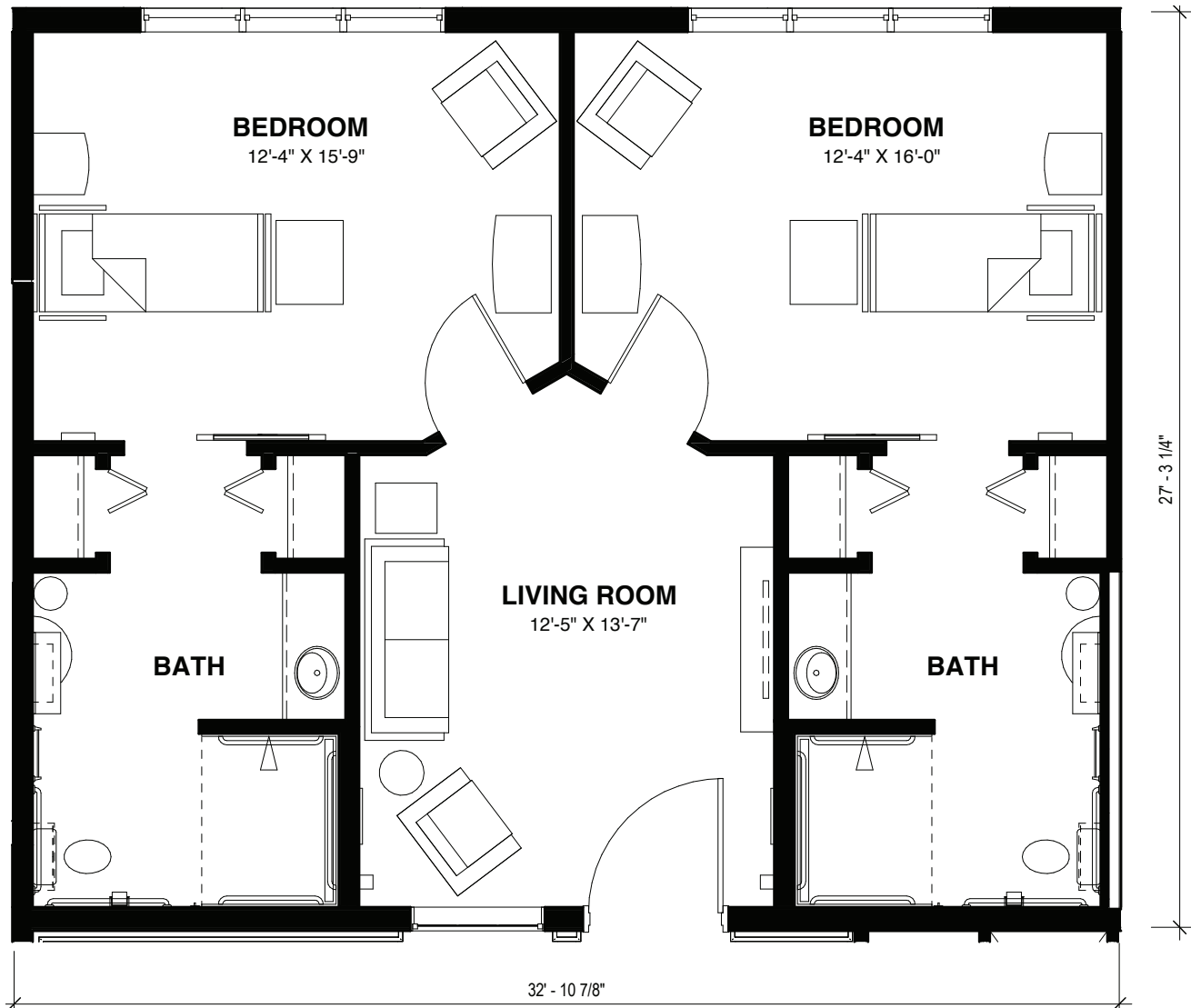
Floorplan graphics provided for conceptual purposes only. Actual construction and finishing may vary. Optional items noted are available through the design process and will incur additional costs.



# WYNGATE

GARDEN, MOUNTAIN  
& LAKE HOUSE  
3<sup>RD</sup> FLOOR

832 SQ FT  
2 BEDROOM, 2 BATH SUITE



THE TERRACES®

AT PEACHTREE HILLS PLACE

Luxury Homes & Condominiums for 55+ | [PeachtreeHillsPlace.com](http://PeachtreeHillsPlace.com)

229 Peachtree Hills Avenue NE Atlanta, GA 30305 | (678) 940-8694

Floorplan graphics provided for conceptual purposes only. Actual construction and finishing may vary. Optional items noted are available through the design process and will incur additional costs.

